

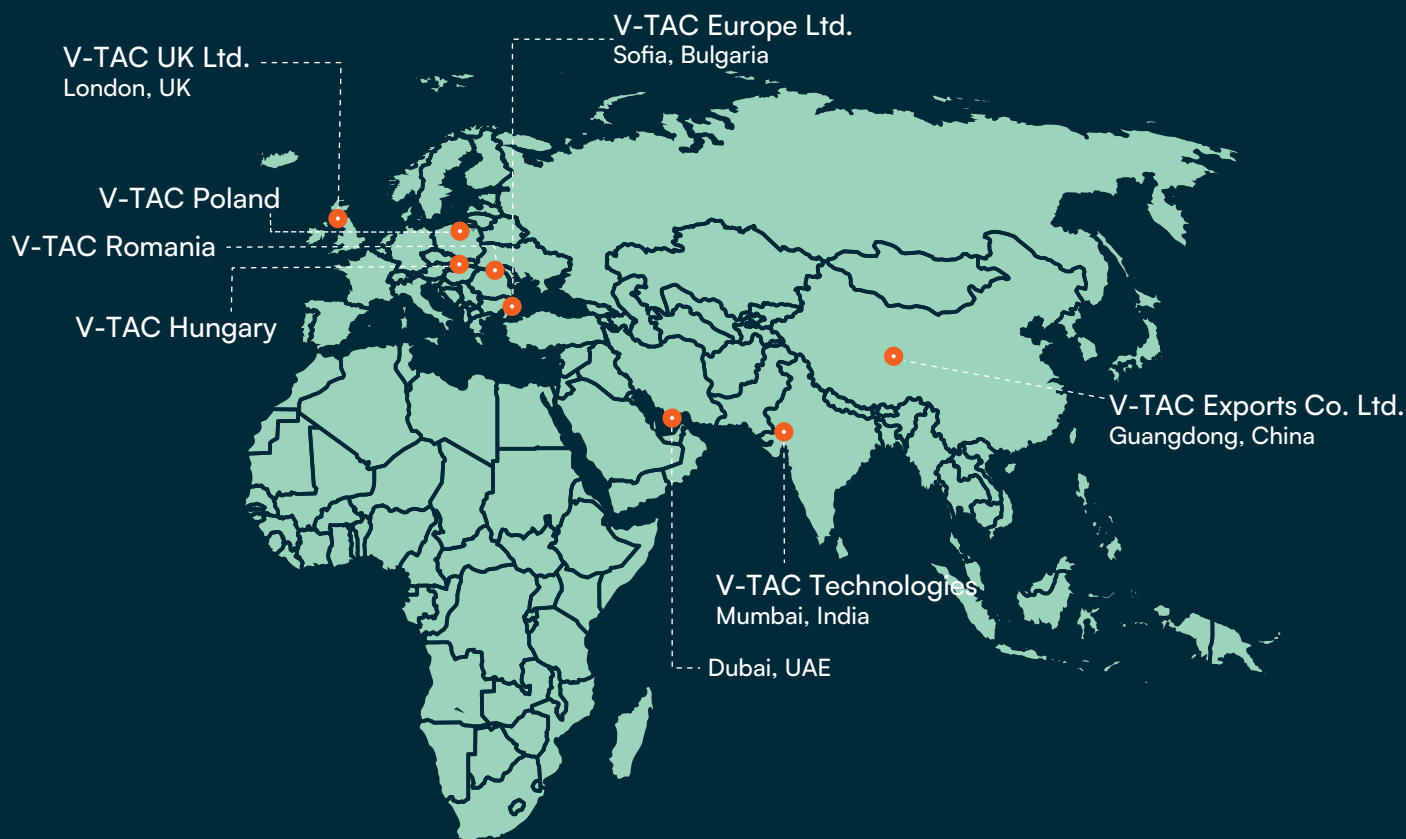
CATALOGUE

SOLAR ENERGY | 2023

COMPLETE ENERGY SOLUTIONS FOR A BETTER TOMORROW

V-TAC

Meaningful Innovation.



WELCOME TO V-TAC

V-TAC Lighting

V-TAC Digital

V-TAC Audio

V-TAC Solar

V-TAC Electrical

V-TAC Smart

V-TAC Energy

V-TAC was founded with the vision of providing energy-efficient LED lighting solutions worldwide.

While building a vast portfolio in LED lighting over the past years, we were also able to build expertise in innovation and expand our R&D team to offer a diversified catalogue with over 3500 products to our clients and partners all over the UK and Europe.

Utilizing our brand value and manufacturing technologies, we have been expanding our product categories beyond lighting, with one mission to improve the lives of humanity worldwide.

Now, we are moving towards promoting sustainable practices that will help citizens and businesses lower their carbon footprint, and become a global leader in providing energy efficient systems — including solar panels, inverters, battery packs, and power stations.



2009

V-TAC was founded with the vision of providing energy-efficient LED lighting solutions worldwide

2011

Began our EU expansion by opening the first V-TAC warehouse and office in Sofia, Bulgaria

2013

Started building our distribution network in the UK from our office in Southall, London.

2015

Launched our in-house product testing lab in Sofia, Bulgaria.

2016

Achieved \$100M Annual Turnover- Manufacturing Joint Venture with DASHER Lighting for decorative lighting.

2017

In-brand partnership with Samsung. Launched the V-TAC Pro series.

2022

Progressed into the green energy era with our new Solar products range

2021

Centralized warehouse in Bulgaria extended to 42000+ sq mts.

2020

- New website launch
- Opened new office in Ireland.

2019

Opened new office in Poland.

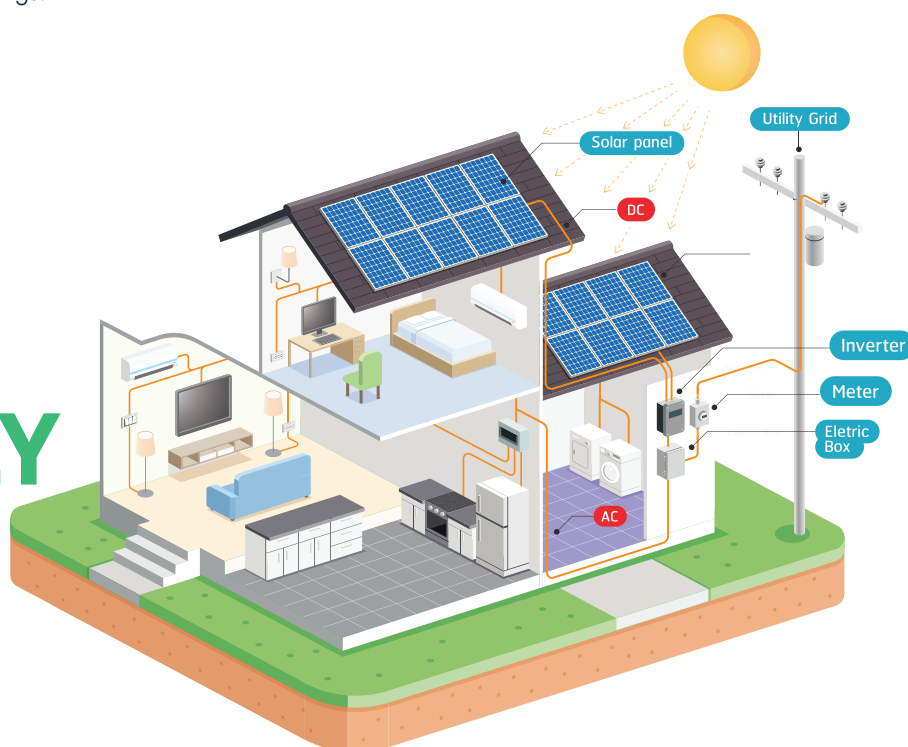
2018

- Partnership with Tuya and launched new Smart Series
- Unveiled the new V-TAC Showroom in Slough, UK

Solar energy is energy derived from sunlight. Whether you realise it or not, the sun already powers our planet, providing the necessary energy to keep the Earth's ecosystem alive and thriving. The amount of sunlight that reaches the earth's atmosphere is enough to power all our needs.

According to the US Department of Energy, 173000 terawatts of solar energy strike the earth continuously, which is more than 10000 times the world's total energy use. The sun is a free, sustainable, clean resource we can utilise in place of conventional electricity to power our day-to-day lives. Solar energy can be used to provide heat, light, and other electricity-dependent needs in residential and commercial buildings.

HOW DO SOLAR PANELS ACTUALLY WORK?



Solar panels are made of highly excitable, conductive materials. When the sun's rays hit the solar panels, the reaction creates direct current (DC) electricity. Do they work even on overcast days? Absolutely, since the sun's rays can still penetrate clouds and reach solar panels.

Since most homes and businesses use alternating current (AC) electricity, your solar-generated DC energy will pass through an inverter to become AC electricity. This energy can be rationed into load for everyday essential appliance use, the rest stored into a battery, reverted back into a grid — entirely dependent on your choice and solar power system goals.

Solar panels enable humanity to maximise solar energy — a free, clean, energy resource. This is a major step in lowering carbon footprint and eventually achieving net-zero. V-TAC's new Energy catalogue aims to promote clean energy access with energy supplies at the best prices, and contributing to economic growth by pushing for energy savings.



WHY SOLAR ENERGY IS IMPORTANT?

There's a reason why so many homeowners and businesses are turning to solar power. The benefits are undeniable, and not just for individuals, but for the planet as a whole. Here are just a few of the many reasons that support the importance of solar energy.

IT'S GOOD FOR THE ENVIRONMENT

The difference between solar energy and conventional electricity is that solar energy does not rely on the use of fossil fuels, does not pollute air or water, and does not contribute to global warming, making it the preferable option for many. Solar energy works with the earth's natural resources, whereas conventional electricity depletes or harms them.

IT'S A RELIABLE, COST-EFFECTIVE ENERGY SOURCE

The sun is a renewable energy source. Fossil fuels will eventually run out, but sunlight won't. For that reason, solar energy is highly reliable. And unlike fossil fuels which are expensive to mine and utilize, it doesn't cost anything to receive sunlight. A one-time installation of solar equipment is all that's needed to reap the benefits.

IT SAVES YOU MONEY IN THE LONG RUN

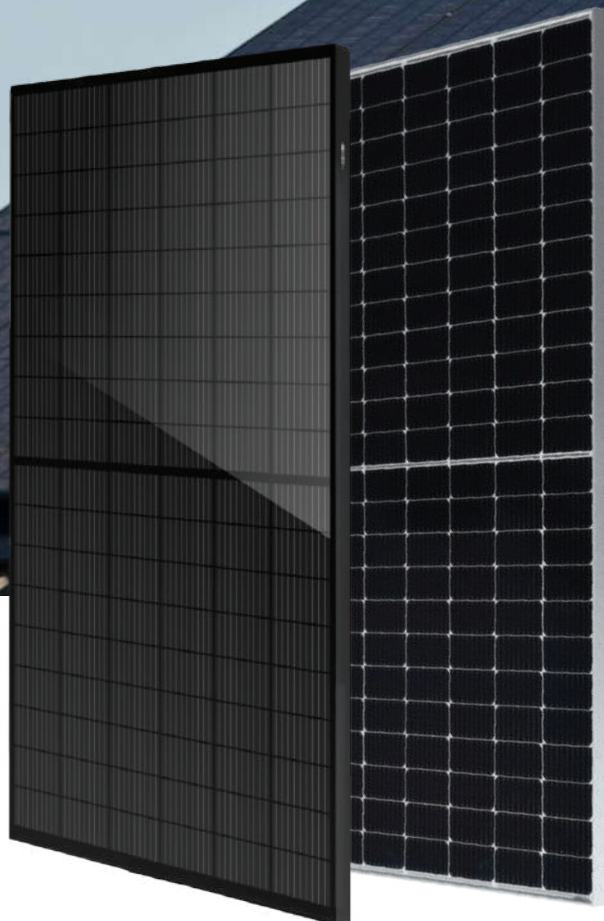
Though the cost of installing solar panels or a solar electric system has decreased in recent years, some may still find the initial investment in solar energy to be intimidating. However, the key is remembering that installation is a one-time event, whereas paying for conventional electricity is a frequent, ongoing, and an expensive obligation, especially as electric rates continue to rise.

IT PROMOTES ENERGY INDEPENDENCE

Energy independence means not having to rely on the power grid. With no other means of powering your home, you could run into a variety of issues in the event of bad weather or damage to power lines. Using solar energy, especially when paired with a backup battery system, allows you to not be tied to unreliable power grids when you need energy most.



Solar Panels



UP TO
12 YEAR
WARRANTY
PRODUCT MATERIAL
AND WORKMANSHIP

25 YEAR
WARRANTY
LINEAR POWER
OUTPUT

V-TAC Solar Panels are engineered for a positive power tolerance, ensuring that they will always produce more power, equal to or greater than their rated power.

PID Resistance means our solar panels maintain their power efficiency despite high voltages, high temperatures, high humidity, and other potential factors. With advanced glass and cell surface textured design, excellent performance even during overcast days is possible. The 25-year Linear Output Warranty to guarantees that optimal power output will still be achieved even after decades of installation.



HALF-CUT TECHNOLOGY
Unique circuit design to reduce temperature heat spots



SIGNIFICANTLY AVOIDING HEAT SPOT
The unique circuit design to reduce the temperature heat spot significantly, so that to reduce the power loss and then increase the output of modules.

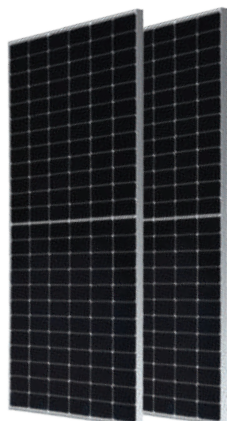


LOWER COST
Increasing power generation can reduce the cost per kilowatt-hour



EXCELLENT PERFORMANCE OF PID RESISTANCE
The performance of PID resistance (Potential Induced Degradation) passed the standard of TUV Nord.





SILVER FRAME SOLAR PANEL

410W

VT-410
SKU 11518

1 meter

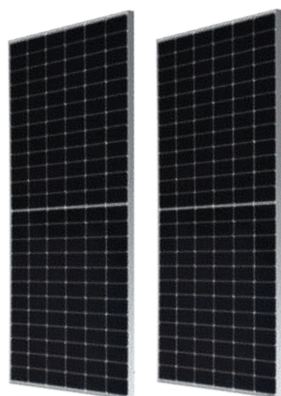
CABLE

MECHANICAL CHARACTERISTICS

| | |
|-----------------------|-------------------|
| Cell Type | 182*91 Mono |
| No. of Cells | 108 (12*9) |
| Dimensions | D:1722*1134*35mm |
| Weight | 21.50kg |
| Junction box | IP67/IP68 3diodes |
| Operating Temperature | -40~+85°C |
| Qty Per Pallet | 31pcs/pallet |

ELECTRICAL DATA (STC)

| | |
|----------------------------|----------|
| Peak Power(Pmax) | 410.00 |
| Maximum Power Voltage(Vmp) | 31.46 |
| Maximum Power Current(Imp) | 13.04 |
| Open Circuit Voltage(Voc) | 37.45±3% |
| Short Circuit Current(Isc) | 13.85±3% |
| Module Efficiency(%) | 20.97 |



SILVER FRAME SOLAR PANEL

410W

VT-410
SKU 11517

1 meter

CABLE

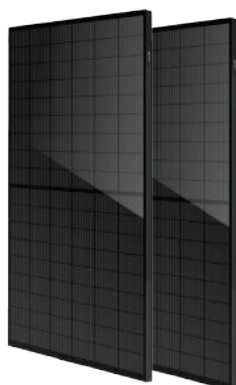
SLIM DESIGN

MECHANICAL CHARACTERISTICS

| | |
|-----------------------|-------------------|
| Cell Type | 182*91 Mono |
| No. of Cells | 108 (12*9) |
| Dimensions | D:1722*1134*30mm |
| Weight | 21.50kg |
| Junction box | IP67/IP68 3diodes |
| Operating Temperature | -40~+85°C |
| Qty Per Pallet | 37pcs/pallet |

ELECTRICAL DATA (STC)

| | |
|----------------------------|----------|
| Peak Power(Pmax) | 410.00 |
| Maximum Power Voltage(Vmp) | 31.46 |
| Maximum Power Current(Imp) | 13.04 |
| Open Circuit Voltage(Voc) | 37.45±3% |
| Short Circuit Current(Isc) | 13.85±3% |
| Module Efficiency(%) | 20.97 |



BLACK SOLAR PANEL

410W

VT-410
SKU 11519

1 meter

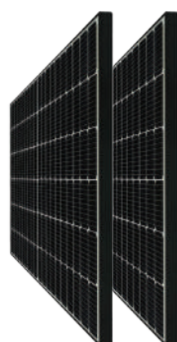
CABLE

MECHANICAL CHARACTERISTICS

| | |
|-----------------------|-------------------|
| Cell Type | 182*91 Mono |
| No. of Cells | 108 (12*9) |
| Dimensions | D:1722*1134*35mm |
| Weight | 21.50kg |
| Junction box | IP67/IP68 3diodes |
| Operating Temperature | -40~+85°C |
| Qty Per Pallet | 31pcs/pallet |

ELECTRICAL DATA (STC)

| | |
|----------------------------|----------|
| Peak Power(Pmax) | 410.00 |
| Maximum Power Voltage(Vmp) | 31.46 |
| Maximum Power Current(Imp) | 13.04 |
| Open Circuit Voltage(Voc) | 37.45±3% |
| Short Circuit Current(Isc) | 13.85±3% |
| Module Efficiency(%) | 20.97 |



BLACK FRAME SOLAR PANEL

410W

VT-410
SKU 11561

1 meter

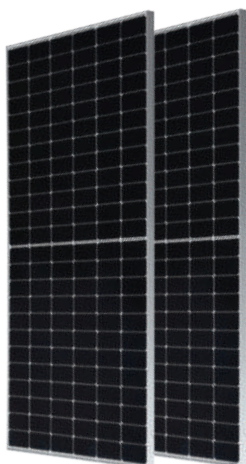
CABLE

MECHANICAL CHARACTERISTICS

| | |
|-----------------------|-------------------|
| Cell Type | 182*91 Mono |
| No. of Cells | 108 (12*9) |
| Dimensions | D:1722*1134*35mm |
| Weight | 21.50kg |
| Junction box | IP67/IP68 3diodes |
| Operating Temperature | -40~+85°C |
| Qty Per Pallet | 31pcs/pallet |

ELECTRICAL DATA (STC)

| | |
|----------------------------|----------|
| Peak Power(Pmax) | 410.00 |
| Maximum Power Voltage(Vmp) | 31.46 |
| Maximum Power Current(Imp) | 13.04 |
| Open Circuit Voltage(Voc) | 37.45±3% |
| Short Circuit Current(Isc) | 13.85±3% |
| Module Efficiency(%) | 20.97 |



450W

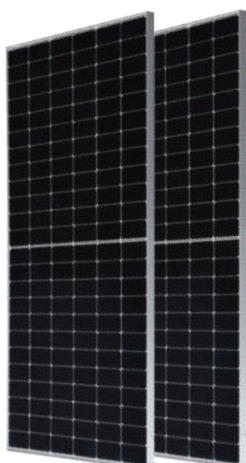
VT-450W
SKU 11353

MECHANICAL CHARACTERISTICS

| | |
|-----------------------|-------------------|
| Cell Type | 166*83 Mono |
| No. of Cells | 144 (12*12) |
| Dimensions | 2094*1038*35mm |
| Weight | 23.50kg |
| Junction box | IP67/IP68 3diodes |
| Operating Temperature | -40~+85°C |
| Qty Per Pallet | 31pcs/pallet |

ELECTRICAL DATA (STC)

| | |
|----------------------------|----------|
| Peak Power(Pmax) | 450.00 |
| Maximum Power Voltage(Vmp) | 41.50 |
| Maximum Power Current(Imp) | 10.85 |
| Open Circuit Voltage(Voc) | 49.30±3% |
| Short Circuit Current(Isc) | 11.60±3% |
| Module Efficiency(%) | 20.70 |



545W

VT-545W
SKU 11354

MECHANICAL CHARACTERISTICS

| | |
|-----------------------|-------------------|
| Cell Type | 182*91 Mono |
| No. of Cells | 144 (12*12) |
| Dimensions | 2279*1134*35mm |
| Weight | 28.40kg |
| Junction box | IP67/IP68 3diodes |
| Operating Temperature | -40~+85°C |
| Qty Per Pallet | 31pcs/pallet |

ELECTRICAL DATA (STC)

| | |
|----------------------------|----------|
| Peak Power(Pmax) | 545.00 |
| Maximum Power Voltage(Vmp) | 41.93 |
| Maximum Power Current(Imp) | 13.00 |
| Open Circuit Voltage(Voc) | 49.90±3% |
| Short Circuit Current(Isc) | 13.92±3% |
| Module Efficiency(%) | 21.08 |



665W

VT-665W
SKU 11544

MECHANICAL CHARACTERISTICS

| | |
|-----------------------|-------------------|
| Cell Type | 210*105 Mono |
| No. of Cells | 132 (12*11) |
| Dimensions | 2384*1303*35mm |
| Weight | 33.90kg |
| Junction box | IP67/IP68 3diodes |
| Operating Temperature | -40~+85°C |
| Qty Per Pallet | 31pcs/pallet |

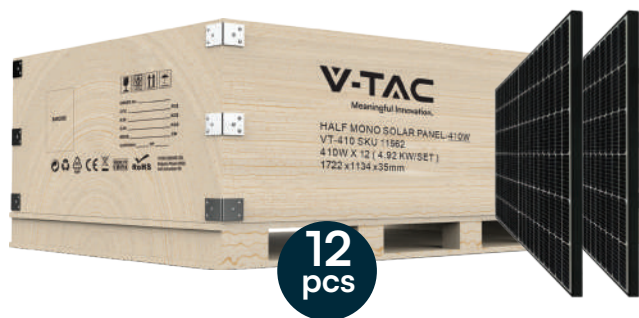
ELECTRICAL DATA (STC)

| | |
|----------------------------|----------|
| Peak Power(Pmax) | 665.00 |
| Maximum Power Voltage(Vmp) | 38.00 |
| Maximum Power Current(Imp) | 17.50 |
| Open Circuit Voltage(Voc) | 45.80±3% |
| Short Circuit Current(Isc) | 18.58±3% |
| Module Efficiency(%) | 21.40 |

Solar Panels Sets



V-TAC launches an innovative way to transport our solar panel range: with the usage of especially packed solar panel sets. The sets were designed with homes and small industrial projects in mind, providing a limited number of panels to match customers' requirements. Our state-of-the-art 410W and 450W panels are packed methodically in mini pallets, which can then be easily transported directly on site to provide the exact power and energy required.



4.92 kW/SET

410W X 12

Half Mono Solar Panel
Black Frame
D:1722*1134*35MM

SKU 11562

1 meter

CABLE



SLIM DESIGN

4.92 kW/SET

410W X 12

Slim Half Mono Solar Panel
D:1722*1134*30MM

SKU 11549

1 meter

CABLE



4.92 kW/SET

410W X 12

Half Mono Solar Panel
D:1722*1134*35MM

SKU 11550

1 meter

CABLE

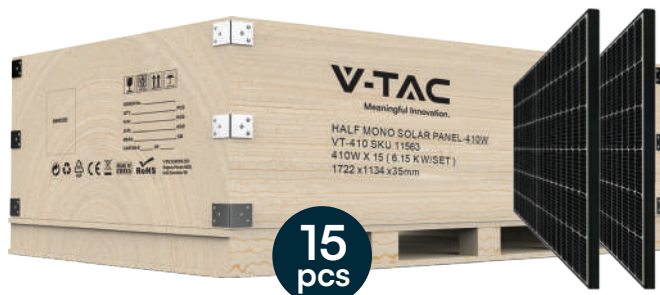


4.95 kW/SET

450W X 11

Half Mono Solar Panel
D:2094*1038*35MM

SKU 11553



6.15 kW/SET
410W X 15

Half Mono Solar Panel
Black Frame
D:1722*1134*35MM

SKU 11563

1 meter

CABLE



SLIM DESIGN

6.15 kW/SET
410W X 15

Slim Half Mono Solar Panel
D:1722*1134*30MM

SKU 11551

1 meter

CABLE



6.15 kW/SET
410W X 15

Half Mono Solar Panel
D:1722*1134*35MM

SKU 11552

1 meter

CABLE



6.30 kW/SET
450W X 14

Half Mono Solar Panel
D:2094*1038*35MM

SKU 11554

Solar Inverters



Solar Inverters are devices that convert the direct current (DC) from the solar panels into alternating current (AC) which is used by domestic and commercial appliances. It is one of the most critical components of the solar power system as it converts power from the sun into useful energy and is often referred to as the brain of a solar system. Solar inverters are a crucial part of a solar system since power from the sun cannot be directly used to run electrical appliances. V-TAC's range of solar inverters have evolved to become much more smart and intelligent units, performing other functions such as data monitoring, advanced utility controls, energy management, and more.

Single Phase

On-Grid Solar Inverters

Typically used in most new houses and small businesses, single-phase on-grid inverters transport electricity via two wires: active and neutral. The electricity from the grid or your solar PV system will only flow through the one active wire, while the neutral wire is connected to the earth at the switchboard. This setup allows you to generate solar power from panels as well as draw power in from the grid to power your homes or offices.



5kW

VT-6605105
SKU 11370

05 YEAR
WARRANTY

| | |
|------------------------|---|
| Number of MPP Trackers | 2 |
| String per MPPT | 1 |



5kW

VT-6605110
SKU 11380

10 YEAR
WARRANTY

| | |
|------------------------|---|
| Number of MPP Trackers | 2 |
| String per MPPT | 1 |



Zero export function
(Optional)



External
Inductor



Aluminum
Enclosure



Natural cooling,
low noise



IP65
Rating

Three Phase

On-Grid Solar Inverters

Three-phase power has four wires, three of which are active, in addition to one neutral wire, which is earthed at the switchboard. Three phase electricity is common in both larger homes and businesses, as well as older homes, and allows for smaller and less expensive wiring, and lower voltages.



5kW

VT-6605305
SKU 11371

8kW

VT-6608305
SKU 11372

10kW

VT-6610305
SKU 11373

| | |
|------------------------|---|
| Number of MPP Trackers | 2 |
| String per MPPT | 1 |

05 YEAR
WARRANTY



Zero export function
(Optional)



External
Inductor



Aluminum
enclosure



Natural cooling,
low noise



IP65
rating

Three Phase

On-Grid Solar Inverters



10 YEAR
WARRANTY

5kW

VT-6605310
SKU 11381

8kW

VT-6608310
SKU 11382

10kW

VT-6610310
SKU 11383

| | |
|------------------------|---|
| Number of MPP Trackers | 2 |
| String per MPPT | 1 |

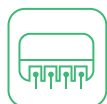


10 YEAR
WARRANTY

30kW

VT-6630305
SKU 11507

| | |
|------------------------|---|
| Number of MPP Trackers | 3 |
| String per MPPT | 2 |



Multi MPP trackers



160% DC Input
oversizing



Smart I-V curve
diagnosis supported



DC&AC type II SPD



Intelligent fault
detection



AFCI function
(Optional)



IP66
rating



50kW

VT-6607150
SKU 11521

10 YEAR
WARRANTY

| | |
|------------------------|---------------|
| Number of MPP Trackers | 4 |
| String per MPPT | 3 / 2 / 3 / 2 |



100kW

VT-6607100
SKU 11520

10 YEAR
WARRANTY

| | |
|------------------------|---|
| Number of MPP Trackers | 9 |
| String per MPPT | 2 |

Single Phase

Hybrid Solar Inverters

Hybrid inverters allows you to generate solar power from panels, draw power from the grid and store excess energy created by the panels into battery packs to be drawn in whenever necessary. The electricity from the grid, solar PV system or the battery will only flow through the one active wire, while the neutral wire is connected to the earth at the switchboard.



5kW

VT-6607103
SKU 11508/11509

05 YEAR
WARRANTY

| | |
|------------------------|---|
| Number of MPP Trackers | 2 |
| String per MPPT | 1 |



Lead-acid/ lithium
Battery



Smart energy
management



Battery reverse
protection



IP66
rating



Zero export
function
(Integrated)

Single Phase

Hybrid Solar Inverters



5kW

VT-6605103
SKU 11376

03 YEAR
WARRANTY

| | |
|------------------------|---|
| Number of MPP Trackers | 2 |
| String per MPPT | 1 |



High DC/AC
ratio



Battery capacity
from 2.4 to 14.4kW.h



User friendly
HMI



Easy to install



Support
battery
customization



6kW

VT-6607106
SKU 11514

05 YEAR
WARRANTY

| | |
|------------------------|---|
| Number of MPP Trackers | 2 |
| String per MPPT | 1 |



UPS function
switch time < 10ms



PV oversize
1.5 times pv oversize



MPPT channels
up to 2 MPPT channels



Multiple inputs
support generator &
wind turbines

Single Phase

Hybrid Solar Inverters



5kW

SKU 11547

6kW

SKU 11537

05 YEAR
WARRANTY

6kW
ITALIAN
SPECIFICATION
SKU 11529

| | |
|------------------------|---|
| Number of MPP Trackers | 2 |
| String per MPPT | 1 |



Colorful touch LCD, IP65 protection degree

135

Max. charging/discharging current of 135A



DC couple and AC couple to retrofit existing solar system

6

6 time periods for battery charging/discharging

16

Max. 16pcs parallel for on-grid and off-grid operation; Support multiple batteries parallel

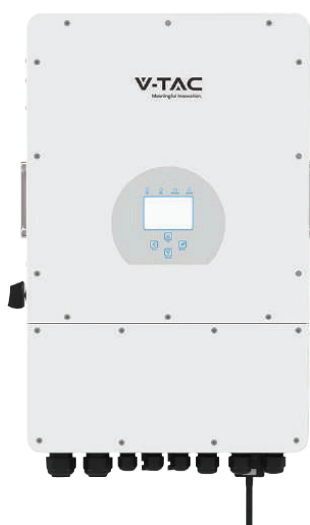


Support storing energy from diesel generator

Three Phase

Hybrid Solar Inverters

Three-phase power has four wires, three of which are active, in addition to one neutral wire, which is earthed at the switchboard. Three phase electricity is common in both larger homes and businesses, as well as older homes, and allows for smaller and less expensive wiring, and lower voltages.



10kW

SKU 11542

05 YEAR
WARRANTY

| | |
|------------------------|-----|
| Number of MPP Trackers | 2 |
| String per MPPT | 2+1 |



Colorful touch LCD, IP65 protection degree



DC couple and AC couple to retrofit existing solar system



Max. 10pcs parallel for on-grid and off-grid operation; supports multiple parallel batteries



48V low voltage battery, transformer isolation design



Max. charging/discharging current of 240A



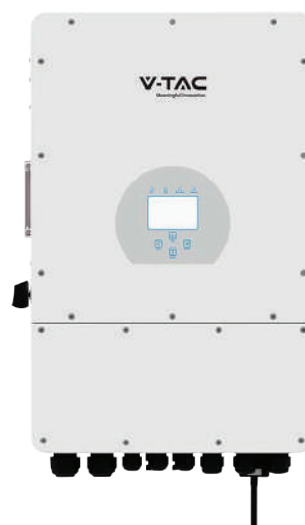
6 time periods for battery charging/discharging



Support storing energy from diesel generator



100% unbalanced output



12kW

SKU 11543

05 YEAR
WARRANTY

| | |
|------------------------|-----|
| Number of MPP Trackers | 2 |
| String per MPPT | 2+1 |

Battery Storage Solutions



Having batteries in your solar power system gives you more energy self-sufficiency, and helps you achieve your ROI. We offer different types of safe, reliable battery solutions to meet power storage needs depending on a variety of factors — the solar array size, on-grid or off-grid system, backup power requirements, and overnight energy consumption in kWh. Our batteries are modular and scalable to easily build your target load with each usable capacity. IP65 options are available for a weatherproof performance all year round.

Rack Mounting

Lithium Battery



5.12kWh

VT-48100E-P2
SKU 11377

05 YEAR
WARRANTY

51.2V

VOLTAGE



**Perfect compatibility
& expandability**



**High performance
& efficiency**



Easy installation



**Long-life lithium
Battery**



9.60kWh

48200B
SKU 11523

05 YEAR
WARRANTY

48.0V

VOLTAGE

Battery Storage Solutions

Indoor

Wall Mounting

Batteries



5.12kWh

VT48100E-W
SKU: 11526

05 YEAR
WARRANTY

51.2V

VOLTAGE



5kWh

AT48-100H
LiFePO4 Battery Pack

VT-5139
KU: 11448

05 YEAR
WARRANTY

48V

VOLTAGE



10kWh

AT48-200H
LiFePO4 Battery Pack

VT-10240
SKU: 11447

05 YEAR
WARRANTY

48V

VOLTAGE

Weatherproof Wall Mounting Batteries



5.12kWh

VT-48100-W2
SKU 11524

05 YEAR
WARRANTY

51.2V

VOLTAGE



**Intelligent BMS
monitoring for
all-round protection**



**A-grade LFP cells,
ensuring safety of
the battery**



**6000 cycle lifespan
with a 10 year
warranty**



14.33kWh

VT-48280-W2
SKU 11525

05 YEAR
WARRANTY

51.2V

VOLTAGE



**Overcurrent
protection**

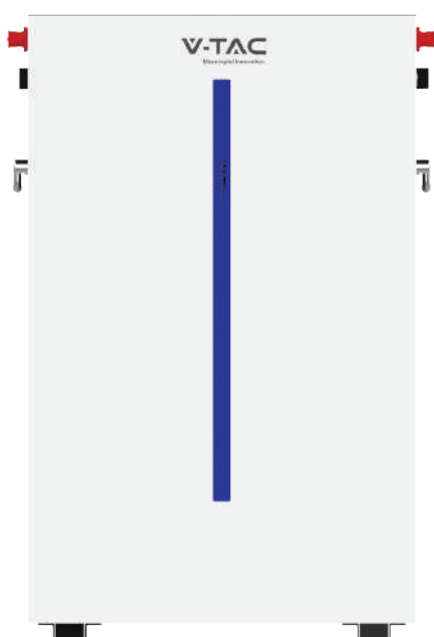


**In-built App to
monitor and track
battery capacity**



**Easy installation with
wall-mounted
latches**

Weatherproof Wall Mounting Batteries



CEI 0-21
Certificate

6.14kWh
SKU 11539

05 YEAR
WARRANTY

51.2V
VOLTAGE

- **Safer**

Cobalt Free Lithium Iron Phosphate (LFP) Battery, safety and long lifespan, high efficiency and high-power density. Intelligent BMS, providing complete protection.

- **Reliable**

Support high discharge power. IP65, natural cooling, wide temperature range: -20°C to 55°C.

- **Flexible**

Modular design, easy to expand, Max. 32 units in parallel, Max. capacity of 196kWh. Suited to residential and commercial applications for increasing the self-consumption ratio.

- **Convenient**

Battery module auto networking, Automatic IP addressing, easy maintenance, remotely monitoring and upgrade, support USB drive upgrade the firmware.

- **Eco-Friendly**

Use environmental protection materials, the whole module non-toxic, pollution-free.

- **Wall-Mounted**

Flat design, wall-mounted, saving installation space.

Waterproof

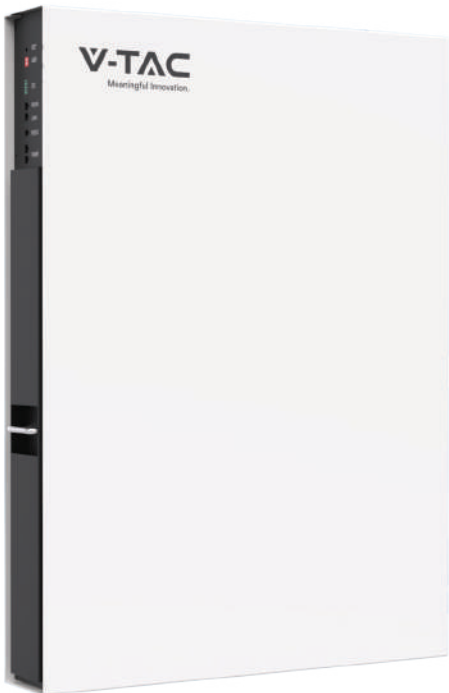
Wall Mounting

Batteries

48.0V
VOLTAGE

7.64kWh
VT-48160
SKU 11548

05 YEAR
WARRANTY



| | General Parameters | Additional Information |
|-----------------------------|--------------------------------|---------------------------|
| Combination method | 15S1P | LiFePO4 |
| Rated capacity | Typical 161Ah minimum 158Ah | 0.2°C,@25°C |
| Rated voltage | 48V | |
| Voltage at end of discharge | 42V | Discharge Cut-off voltage |
| Standard charge current | 32A | Charge time : Approx 6h |
| Limiting current | 20A | Software opening |

Solar System



We are dedicated to helping you shift to clean energy — our solar system kits are designed so anyone can easily jumpstart their journey to having a sustainable, solar power system. On-grid and hybrid options are available, so you can either keep your local electric connection or live off-the-grid at your choice. Whether residential, commercial, or industrial, we offer complete solar systems to meet your power needs at your specifications.

Hybrid

Solar System

4.92 kWp



LiFePO4 Battery

Hybrid Inverter

Half Mono Solar Panels

| SKU | Product | Specification | Quantity |
|-------|------------------------------------|-------------------------|----------|
| 11549 | Half Mono Solar Panel | 410W with 1 meter cable | 12 |
| 11547 | Single Phase Hybrid Solar Inverter | 5kW | 1 |
| 11448 | LiFePO4 Battery Pack | AT48-100H | 1 |
| | Assorted Accessories | | |

Whether it is installed on a roof or in a remote location, this 5kW Complete Solar Panel System Kit with Battery and Inverter can be easily connected to any electrical system. PV systems generate electricity during the day, which is initially supplied to loads. Hybrid Inverters will then charge the battery with the excess energy. Lastly, the stored energy can be released when needed.

Hybrid

Solar System

9.97 kWp



LiFePO4 Battery

Hybrid Inverter

Half Mono Solar Panels

| SKU | Product | Specification | Quantity |
|-------|-----------------------------------|-------------------------|----------|
| 11549 | Half Mono Solar Panel | 410W with 1 meter cable | 24 |
| 11542 | Three Phase Hybrid Solar Inverter | 10kW | 1 |
| 11447 | LiFePO4 Battery Pack | AT48-200H | 1 |
| | Assorted Accessories | | |

With a 10kW solar system, businesses, manufacturing facilities, and offices can operate independently without relying on government power. PV systems generate electricity during the day, which is initially supplied to loads. Hybrid Inverters will then charge the battery with the excess energy. Lastly, the stored energy can be released when needed.

On-grid

Solar System
4.92 kWp



Solar Inverter

Half Mono Solar Panels

| SKU | Product | Specification | Quantity |
|----------------------|-------------------------------------|-------------------------|----------|
| 11549 | Half Mono Solar Panel | 410W with 1 meter cable | 12 |
| 11370 | Single Phase On-Grid Solar Inverter | 5kW | 1 |
| Assorted Accessories | | | |

On-Grid PV systems are those that utilize utility (grid) power - whether for utility, commercial, residential or stand-alone buildings. On-grid systems are designed to partially or entirely satisfy a user's energy needs, thereby offsetting utility grid energy demand.

Light Industrial Solar System



Three Phase On Grid/ Off Grid
Solar Inverter

8kW

VT-6608303
SKU 11375

03 YEAR
WARRANTY



**Lead-acid/ Lithium
battery**



**Battery reverse
protection**



**IP66
rating**



**Smart energy
management**



**Zero export
function
(Integrated)**



Smart ESS Solution

20kWh

VT-204100B-W
SKU 11527

05 YEAR
WARRANTY



**Intelligent BMS
monitoring for
all-round protection**



**Overcurrent
protection**



**A-grade LFP cells,
ensuring safety of
the battery**



**In-built App to
monitor and track
battery capacity**



**6000 cycle lifespan
with a 10 year
warranty**



**Easy installation with
wall-mounted
latches**

Compatible with all V-TAC Solar Systems

END CLAMP 35MM
SKU: 11388



MIDDLE CLAMP 35MM
SKU: 11389



SILVER RAIL
1.2 METER SKU: 11390
2 METERS SKU: 11538



ROOFTOP HOOK-01
SKU: 11391



L FEET GROUP
SKU: 11583



STEEL HORSE-SHAPED
KLIPLOCK01 SET
SKU: 11584



STEEL HORSE-SHAPED
KLIPLOCK02 SET
SKU: 11585



TT-NUT
SKU: 11392



SPLICE FOR RAIL
SKU: 11394



GROUNDING PLATE
SKU: 11395



ADJUSTABLE
FRONT LEG
SKU: 11417



ADJUSTABLE REAR LEG
(10°-15°) SKU: 11385
(15°-30°) SKU: 11386



PV CABLE
CONNECTOR-MC4
SKU: 11413



TRIANGLE
SUPPORT-1700
SKU: 11387



PV CABLE 100M

4 SQUARE - SKU: 11414 BLACK
4 SQUARE - SKU: 11418 RED
6 SQUARE - SKU: 11415 BLACK
6 SQUARE - SKU: 11419 RED



PV6 CABLE WITH MC4
CONNECTORS 2 END
FOR SOLAR PANEL
CONNECTION
1 METER SKU: 11570
2.5 METERS SKU: 11416



WIFI DONGLE
FOR INVERTERS
SKU 11528



STORAGE BATTERY RACK
MAX 5 LAYERS
SKU 11556

Size: 558*500*160mm
Adapting Battery-VT48100E-P2



STORAGE BATTERY RACK
MAX 3 LAYERS
SKU 11557

Size: 598*589*260mm
Adapting Battery-VT48200B



SINGLE PHASE SMART METER

SKU: 11545



| | |
|---------------------|--|
| Nominal voltage | 220V, 230, 240V |
| Current | 5(80) A |
| Reference frequency | 50Hz or 60Hz |
| Accuracy | Class 1.0 |
| Operating range | 0.85Un ~ 1.15Un |
| Power consumption | Voltage loop: ≤1W/5VA; Current loop: ≤2VA |

THREE PHASE SMART METER

SKU: 11546



| | |
|---------------------|--|
| Nominal voltage | 3x220~240/380~415V; 3x120~138/208~240V |
| Current | Direct access: 5(80)A; Mutual access: 1.5(6)A |
| Reference frequency | 50Hz or 60Hz |
| Accuracy | Class 1.0 for 5(80)A; Class 0.5 for 1.5(6)A |
| Operating range | 0.85Un ~ 1.15Un |
| Power consumption | ≤1W/8VA |

Portable Power Solutions



Travel

Stay powered and connected. Charge your devices anywhere — less time worrying about running low on battery and more time enjoying your trip.



Drone



Camera



Laptop



Leisure

New spot for your hobbies? Or just a new space for the family to hang out in? Power up your new space of comfort and fun.



Fan



Electric Grill



Mini Cooler



Home

Say goodbye to the inconvenience of sudden outages — power up your basic home appliances whenever you need them. Also perfect for those working in flexible setups.



Printer



Blender



Mobile



Professional

Ideal for power tools, workshops, renovations, construction, outdoor house cleaning, and outdoor events.



Drill



Chainsaw



Tools

Portable Power Solutions

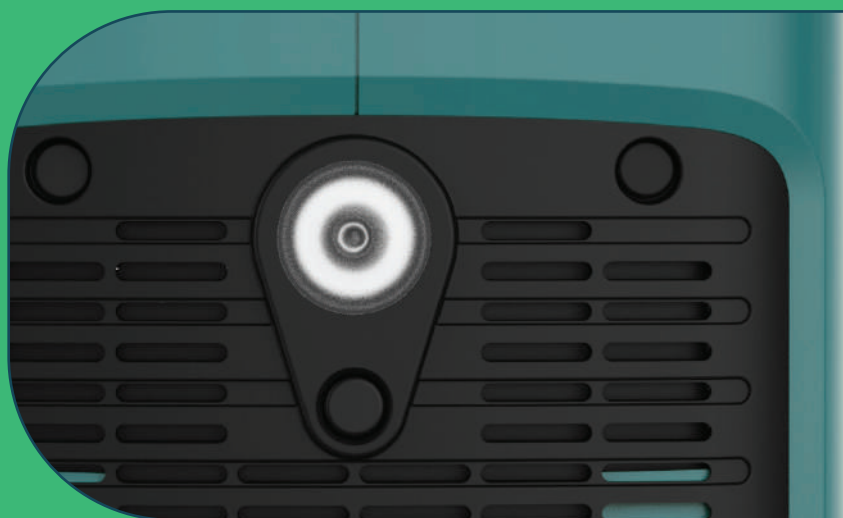
High Capacity Power

High-performance, high safety and high power lithium iron phosphate cell



LED Light For Camping

A must-have tool when camping or attending outdoor events



Wireless & Faster Charge

Charging wirelessly and supporting QC3.0 quick charging





300W

VT-303
SKU 11441

AUXILIARY
CHARGE OUTPUT

AC
OUTPUT
HIGH EFFICIENCY

POWER
DELIVERY
QC 3.0
18W



500W

VT-606
SKU 11442



1000W

VT-1001
SKU 11443



2000W

VT-2002
SKU 11445



MPPT

Solar energy charging
maximum power
point tracking

SUITCASE
DESIGN

A trolley-shaped design
makes it easy to carry
wherever you go

AUXILIARY
CHARGE OUTPUT

AC
OUTPUT
HIGH EFFICIENCY

POWER
DELIVERY
QC 3.0
18W

LED
LIGHT
500 LM

WIRELESS
CHARGE OUTPUT
15W

Flexible & Folding Solar Panels

Compatible with all Portable Power Stations



Flexible Solar Panels

100W

VT-10100
SKU 11568

Power 100W
Size: 980*586*2.7mm
Working voltage 17V
Working current 5.88A

- **Portable, Foldable, and Adjustable**
Designed with an adjustable kickstand, seamlessly install the panels and get the best angle while solar charging. When you're done charging, just fold the panels and bring them everywhere you go.

- **Built to Last**
Designed to withstand scratches and poor weather, the ultra-durable solar panels are ideal for the outdoors and come in handy during power outages.

210W

VT-10210
SKU 11569

Power 210W
Size 1035*1035*2.7mm
Working voltage 20.5V,
Working current 10.24A,



Portable power supply 2in1
SKU 11573

03 YEAR
WARRANTY



Folding Solar Panels

02 YEAR
WARRANTY

80W

VT-10080
SKU 11564

| | |
|--------------------------|-----------------------------|
| Battery type | Monocrystalline solar cells |
| Folding method | 1*4 fold |
| Folded size | 366*356*54mm±5mm |
| Expanded Size | 1670*356*25mm±5mm |
| Weight (NW) | 4.3KG±0.5KG |
| Standard working Voltage | 17.6V |
| Standard Working Current | 4.54A |

120W

VT-10120
SKU 11446

| | |
|--------------------------|-----------------------------|
| Battery type | Monocrystalline solar cells |
| Folding method | 1*4 fold |
| Folded size | 430*540*54mm±5mm |
| Expanded Size | 1930*430*25mm±5mm |
| Weight (NW) | 4.0Kg±0.3Kg |
| Standard working Voltage | 17.6V |
| Standard Working Current | 6.36A |

120x2W

VT-10240
SKU 11565 With 2in1 Cable

| | |
|--------------------------|-----------------------------|
| Battery type | Monocrystalline solar cells |
| Folding method | 1*4 fold x 2pieces |
| Folded size | 430*540*54mm±5mm |
| Expanded Size | 1930*430*25mm±5mm |
| Weight (NW) | 4.0Kg±0.3Kg |
| Standard working Voltage | 17.6V |
| Standard Working Current | 12.72 |

160W

VT-10160
SKU 11566 With 2in1 Cable

| | |
|--------------------------|-----------------------------|
| Battery type | Monocrystalline solar cells |
| Folding method | 1*4 fold |
| Folded size | 680*468*54mm±5mm |
| Expanded Size | 1670*680*25mm±5mm |
| Weight (NW) | 6KG±0.5KG |
| Standard working Voltage | 17.6V |
| Standard Working Current | 9.08A |

Sofia Office

V-TAC Europe Ltd
41, bul. Rozhen
1271 Sofia
Bulgaria
www.v-tac.eu
office@v-tac.eu

UK Office

V-TAC House, Kelpatrick Road,
Slough, Berkshire, SL1 6BW, UK.
www.v-tac.co.uk
info@v-tac.co.uk

Hungary Office

Népfürdő utca 13. | H-1138
Budapest, Ungarn

Romania Office

Bulevardul Unirii, numărul 33
(vis-a-vis de Institutul Bancar Român),
București

Poland Office

V-TAC POLAND sp. z o.o.
Ul. Obornicka 330
60-689 Poznań

Middle East Office

Unit# 407/8/9 Jumeirah Bay Towers,
Plot# X3, JLT, P.O. Box 45244, Dubai

V-TAC West Europe

Ground Floor, 71 Lower Baggot
Street, Dublin 02, Ireland
D02 P593

V-TAC

Meaningful Innovation.

COMPLETE ENERGY SOLUTIONS FOR A BETTER TOMORROW